

# ENGINE POWERED ARTICULATING BOOMS LIFT JLG 600AJ 20M HEIGHT

## FEATURES

Platform height elevated 18,29 m
Overall width 2,44 m
Platform capacity 230 kg
Platform side entry 0,91 m x 1,83 m
Control for the main boom and the fully proportional oscillation
180 degree hydraulic platform rotator



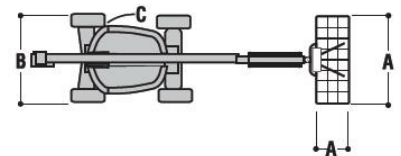
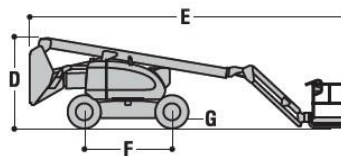
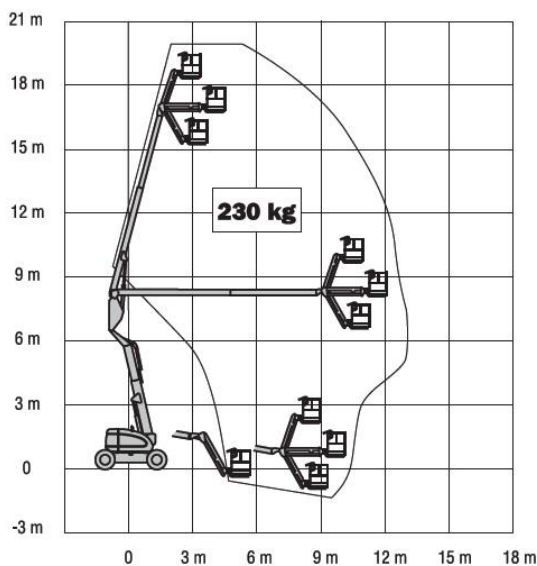
**GLOBEN**

**GLOBEN, S.L.**  
C/Germán Bernácer 95  
Elche Parque Empresarial  
Apdo. De Correos 5154·03203 **ELCHE** (Alicante)  
Telf. **966 299 599** · Móvil 673 823 100  
Fax 965 680 523 · [info@globen.es](mailto:info@globen.es)  
[www.globen.es](http://www.globen.es)



## DIMENSIONS

<b>Platform height (elevated)</b>	<b>18.46 m</b>
<b>Horizontal outreach</b>	<b>11.81 m</b>
<b>Up and over height</b>	<b>8.09 m</b>
<b>Swing (continuous)</b>	<b>360°</b>
<b>Platform capacity</b>	<b>230 kg</b>
<b>Platform rotator (hydraulic)</b>	<b>180°</b>
<b>Jib – Overall length</b>	<b>1.83 m</b>
<b>Jib – Range of articulation</b>	<b>130° (+70°/ -60°)</b>
<b>A. Platform size</b>	<b>0.91 m x 1.83 m</b>
<b>B. Overall width</b>	<b>2.45 m</b>
<b>C. Tailswing (work position)</b>	<b>0</b>
<b>D. Stowed height</b>	<b>2.56 m</b>
<b>E. Stowed length</b>	<b>8.82 m</b>
<b>F. Wheelbase</b>	<b>2.44 m</b>
<b>G. Ground clearance</b>	<b>0.30 m</b>
<b>Platform weight</b>	<b>10,830 kg</b>
<b>Maximum ground bearing pressure</b>	<b>5.30 kg/cm<sup>2</sup></b>
<b>Drive speed 4 x 4 x 2</b>	<b>6.8 km/h</b>
<b>Gradeability 4 x 2 x 2</b>	<b>30%</b>
<b>Gradeability 4 x 4 x 2</b>	<b>45%</b>
<b>Tires</b>	<b>IN 355/55 D625</b>
<b>Axle oscillation</b>	<b>0.20 m</b>
<b>Turning radius (intern) 4 x 2 x 2</b>	<b>3.30 m</b>
<b>Turning radius (intern) 4 x 2 x 4</b>	<b>1.46 m</b>
<b>Turning radius (extern) 4 x 2 x 2</b>	<b>5.56 m</b>
<b>Turning radius (extern) 4 x 2 x 4</b>	<b>3.73 m</b>
<b>Diesel engine– Deutz D2011L04</b>	<b>37 kW</b>
<b>Diesel engine – (option) CAT 3.4</b>	<b>47 kW</b>
<b>Fuel tank capacity</b>	<b>114 L</b>
<b>Hydraulic reservoir</b>	<b>139 L</b>
<b>Auxiliary power</b>	<b>12V DC</b>



**GLOBEN**